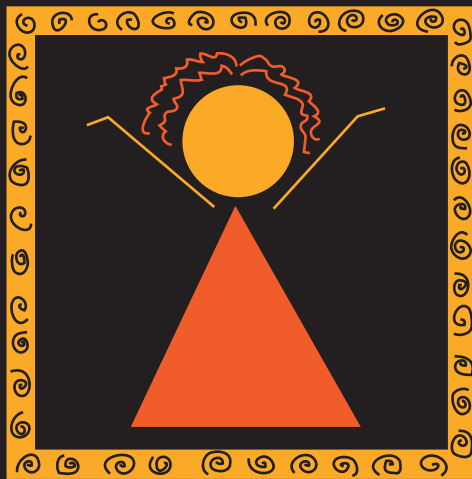
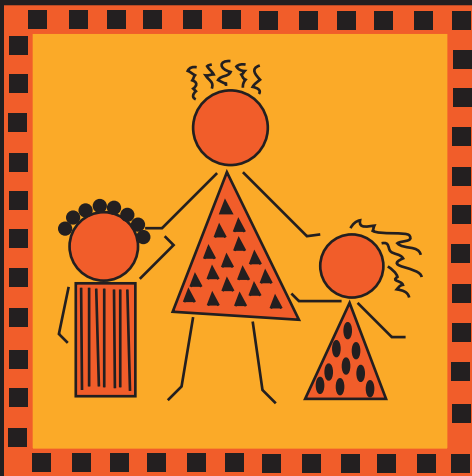


Connecting Through Cultures:

Increasing Access
To Health Care



Maternal and Child
Health Consortium
of Chester County

Annual Report 2003

Board of Directors

Nadine Bean, Ph.D.
Yvette Franklin
Anne M. Fussell, President
Haydee Gullaksen
Evan K. Hambleton, Esq.
Luz Hernandez
Daryl Endy Klein, Esq.
Rosemary Laird
Deborah A. McKenty, Esq.,
Secretary
Rae Morgan
Alita A. Rovito, Esq.
Michelle Rudiman
Sarah Sands
M. Linda Schaeffer, Treasurer
Edward Schwabenland, Esq.

Mission

MCHC seeks to improve maternal and child health through the collaborative efforts of individuals, providers and policy makers.

Citadel Federal Credit Union provided generous support for the production of this report.

Staff

Executive Director:
Pamela Bryer, M.P.H., C.F.R.E.

Director of Programs:
Maryann McMackin Mesure, M.S.S.

Program Manager:
Neydary Zambrano, L.L.M.
Marie Satterwhite, M.A.

*Administrative Asst./
Volunteer Coordinator:*
Terri Hagerty

Business Manager:
Lisa DeLaurentis

Training & Education Coordinator:
Iris Ayala, L.P.N., I.C.C.E.

Community Outreach Coordinator:
Beth Dyas

Project Specialist:
Denise Franco

MIS Manager:
Nancy Joseph

Data Coordinator:
Linda Peters

Office Assistant:
Alicia Bradford

Supervisors:
Christine Grantham
Judith Harris-Stevenson
Milena Lanz
M. Cristina Navarro, M.Ed.

Family Health Advocates:
Amelia Boyer
Vale Coleman
Linda Harmon
Claudia Jones
Maria Jordan
Amanda Norlen
Delmy Orellana-Baires
Maria Ortiz
Sonia Ortiz
Maritza Rivera Cochran
Maria Rodriguez

Web Master:
Suzanne Werkema

“Deciphering health insurance options, finding useful information on healthy living, and communicating effectively with health care professionals are difficult enough for native English speakers. Imagine trying to do so in a system where nearly no one speaks your language. We are also all products of our culture, which influences our views and behaviors regarding health and illness. As the book, [The Spirit Catches You and You Fall Down](#), graphically illustrated, ignorance of cultural differences and disregard for the role culture plays in health and healing can have dire consequences.”

Lauren LeRoy

Remarks at *Grantmakers In Health*

Annual Meeting

February 26, 2004

Eliminating Racial and Ethnic Disparities

For nearly ten years, MCHC has helped women, children and families gain access to health care.

Racial and ethnic minorities in Chester County experience a higher rate of a variety of health concerns than other populations. For example:

- ▲ Delayed or lack of prenatal care increases the risk of low birth weight and many maternal health problems. In Chester County, African American and Hispanic women are less likely than White women to get early prenatal care.
- ▲ Low birth weight is the leading cause of infant death and morbidity and is largely preventable. In Chester County, African American infants are more than twice as likely as White infants (11.3% vs. 5.7%) to be low birth weight.
- ▲ Minority women, infants, and children have a higher rate of being uninsured than White children. In fact, Latino children are more likely than any other racial or ethnic group of U.S. children to be uninsured. These children face roadblocks to enrollment that include cultural, language, and transportation barriers.

An Institute of Medicine Report (2002) noted that “increased health insurance coverage would likely reduce racial and ethnic disparities in the use of appropriate health care services”.

MCHC works to reduce racial and ethnic disparities and increase access to care for families in Chester County. These efforts focus on 3 major areas:

- (1) Healthy Start**—our community-based initiative providing bilingual, bicultural outreach, education and enrollment into early prenatal care to improve birth outcomes. More than 95% of Healthy Start African American infants are of healthy birth weight.
- (2) Health Insurance Enrollment**—MCHC coordinates a countywide initiative to reduce disparities in access to health care through public awareness about available health insurance options and enrollment of uninsured women and children into state subsidized health insurance programs such as CHIP and Medicaid.
- (3) Latino Health Initiative**—MCHC provides Spanish language medical interpreting, bilingual health educational materials for women and men, and bilingual Parenting and Prenatal classes to parents previously denied these services due to language, culture, or financial roadblocks.

These initiatives work to reduce disparities to care. Last year, MCHC worked with nearly 900 pregnant and parenting women through Healthy Start; enrolled nearly 800 women, infants, and children into health insurance; and made a complex, disjointed health care system work for hundreds of low income women and children.



Oxford participant Martha Correa and Amelia Boyer giving baby Isabel a healthy start.

Anne M. Fussell

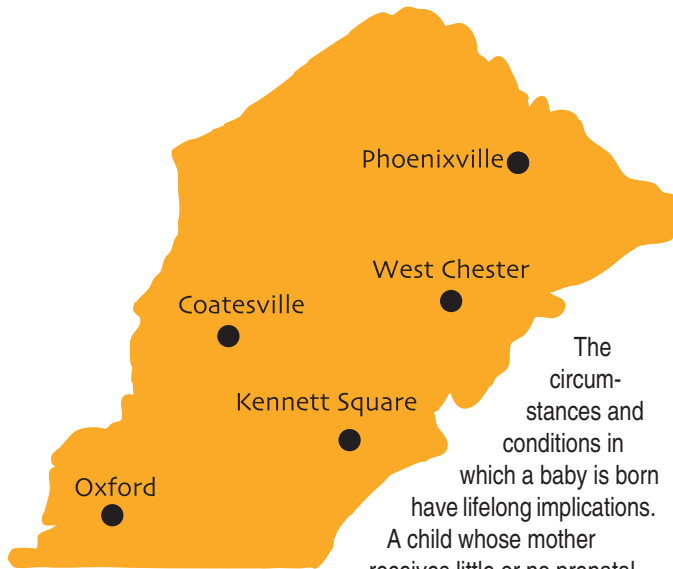
Anne M. Fussell
President, Board of Directors

Pamela Bryer

Pamela Bryer
Executive Director

Healthy Start

Chester County Healthy Start Sites



The circumstances and conditions in which a baby is born have lifelong implications. A child whose mother receives little or no prenatal care is far more likely to experience chronic health problems than other children whose mothers did receive prenatal care.

Prenatal care is cost-effective: The Institute of Medicine estimates that for every dollar spent on prenatal care, \$3.38 is saved in medical costs for low birth weight babies (Pennsylvania Health Care Cost Containment Council, "Promoting Maternal Health in the Workplace", December 2003).

Healthy People 2010 Objective 16.8: "Reduce low birth weight to no more than five percent of all live births."

Healthy People 2010 Objective 16.17: "Increase abstinence from alcohol, cigarettes, and drugs among pregnant women."



Healthy Start Phoenixville teamed with Phoenixville Rotary, CAT Brandywine, and COAD on a car seat safety event.

Healthy Start Goals

- (1) Promote positive health behaviors before and during pregnancy, resulting in healthy birth outcomes.
- (2) Increase access to health care through health insurance enrollment, medical interpreting, and transportation assistance.
- (3) Promote healthy infant and child development through prenatal and parenting education classes in Spanish and English; and distribution of low literacy health education materials.
- (4) Encourage self-sufficiency by linking women to community resources in employment, job training, and education programs.



Healthy Start mom Heather Coles with baby.

Profile of Healthy Start Enrollees 2003:

- ▲ Total number of families served: 878
- ▲ Race/Ethnicity: African American—14% Latino—57% White—24% Other—5%
- ▲ Teens: 21%
- ▲ First time parent: 49%
- ▲ No insurance at enrollment: 76%
- ▲ Moms who breastfeed: 66%
- ▲ Infants of healthy birth weight: 94%

Services Provided:

- ▲ Medical interpreter encounters: 678
- ▲ Visits made: 3,523
- ▲ Transportation to prenatal, mental health, and pediatric appointments: 471 trips.

Business, Babies and the Bottom Line:

"Companies have a vested interest in improving maternal and child health. Not only are they concerned about the health and productivity of their current workforce, but also that of future workers. Childbirth-related costs are the single largest component of health care costs for many employers. One unhealthy birth can cost anywhere from \$20,000 to more than \$1 million, compared to about \$6,400 for a normal, healthy delivery."

(National Business Group on Health).

Promoting Language Access and Health Literacy

In the document “Addressing Language and Culture in Providing Health Care” (August 2003), Grantmakers in Health notes the following health consequences of language barriers:

Access

Language barriers have been shown to impede access at several entry points, from having health insurance to receiving basic and preventive care to accessing specialty services.

Patient Satisfaction

Patients are more satisfied when they have access to a trained and qualified interpreter.

Quality of Care

Language barriers diminish quality of care and can lead to serious complications and adverse clinical outcomes.

Costs to the Health Care System

Language barriers can escalate costs to the health care system by increasing inefficiencies and unnecessary testing.

Training

Bilingual skills do not automatically make an individual an effective interpreter. Trained interpreters have critically important memory skills, the ability to negotiate a three-way conversation, and basic knowledge of cultural attributes that can influence health.

Promoting Language Access

In 2003, MCHC increased linguistic access to health care through:

- ▲ 678 interpreting encounters for 435 Spanish speaking families.
- ▲ MCHC trained 11 Spanish speaking medical workers as Medical Interpreters. (Health care staff in all 5 Chester County hospitals have enrolled in the MCHC Interpreter Training since 1999.)
- ▲ Of the 878 Healthy Start women enrolled in 2003, 480 (55%) spoke Spanish. Healthy Start provided translation of written English materials, provided low-literacy Spanish health education information, and served as interpreters and cultural brokers with prenatal and pediatric providers for 435 families.
- ▲ Healthy Start Program Manager, Neydary Zambrano chairs the county’s Council for Latino Concerns, advocating for increased access to health and social services for Latino families.



Healthy Start participant Ana Martinez and children with Family Health Advocate Maria Ortiz.

Promoting Literacy:

In October 2003 (Health Literacy Month), MCHC began a book collection drive to encourage literacy in our Healthy Start families. This project included public and independent schools, faith communities, and corporations that worked together to make sure that all of our Healthy Start families have books in their homes. Now, new mothers receive books at home visits and all Healthy Start offices have books to distribute in Coatesville, West Chester, Phoenixville, Kennett Square and Oxford.

The project had many volunteers including Susan Elko, who coordinated book collection drives in West Chester elementary schools, including Penn Wood, Glen Acres, East Bradford, and Mary C. Howse; and Patricia Rauch of The Sandvik Company for donating thousands of beautiful books; The A. Duie Pyle Company for donating a truck and driver to pick up these books in Philadelphia and transport them to our West Chester storage facility.

The students at Westtown Lower School also collected hundreds of books for Healthy Start families as part of their holiday service project.

A generous donation from Downingtown Friends Meeting enabled MCHC to purchase bilingual, Spanish/English children’s books for our Latino families. These books will help us promote the importance of literacy for our Healthy Start families.

“Making sure that providers and patients can communicate makes all the difference in the world. This training has helped in improving care for Latino families and reducing communication errors because of language differences.”

Jamilette B. Melendez, Director of Marketing and Public Relations, Phoenixville Hospital and participant in MCHC Interpreter Training.

Health Insurance

The uninsured come primarily from working families with low and moderate incomes—families for whom coverage is not available at work or not affordable to them. According to the Kaiser Commission on Medicaid and the Uninsured, “Having insurance improves health overall and could reduce mortality rates for the uninsured by 10-15% (2003).”

Generous support from the following local funders has supported our health insurance initiative: Brandywine Health & Wellness Foundation, Phoenixville Community Health Foundation, Dircks Family Foundation, K & M Foundation, Huston Foundation, and The Robert Wood Johnson Foundation (via PCCY).

MCHC has provided leadership in increasing access to health care in Chester County for ten years. Through **(1) Community Education** about eligibility and information about insurance enrollment; **(2) Coordination** of a countywide insurance enrollment network; and **(3) Advocacy** at the local and state levels for increased access to care, MCHC has improved health for thousands of families.

(1) Community Education and Public Awareness:

MCHC Family Health Advocates provide individual health insurance information and enrollment for pregnant women and their children each year. Through community education events in Coatesville, Phoenixville, West Chester, Kennett Square, and Oxford, MCHC staff provide information and enrollment for CHIP, Medicaid and adultBasic for other community residents.

- ▲ Most significantly, in 2003, 76% of all new Healthy Start clients had no insurance at the time of enrollment. Healthy Start enrolled all in coverage for prenatal care and/or delivery. Beth Dyas, MCHC Outreach Coordinator promoted coverage availability during the national Robert Wood Johnson Foundation (RWJF) sponsored “Week of the Uninsured” in March.
- ▲ MCHC coordinates an annual “Back to School Campaign” (health insurance enrollment), also sponsored by RWJF and the Covering Kids and Families program—with outreach and enrollment activities that were held countywide.
- ▲ Healthy Start participated in Senator Bob Thompson’s Kids Expo in April 2003, providing information about available resources for a healthy pregnancy and health insurance.
- ▲ Healthy Start was also present at 62 other community events during the year, including hospital baby showers and community dental education.



“Health Insurance and Medical Coverage was cited as a concern in a recent county survey with almost 24% or 1 in 4 respondents.”

“Some respondents of color and those in lower income categories are disproportionately concerned about a lack of insurance coverage for prescriptions, dental care, and vision care, as well as for basic health insurance coverage.”

(Planning for a Healthy Chester County- A Health and Human Services Perspective, 2003).



Healthy Start participant Elizabeth Mandruziak with baby Phillip.

(2) Coordination of a Countywide Insurance Enrollment Network:

- ▲ MCHC was one of 20 agencies (out of 174 applicants state-wide) to receive a “Reaching Out” grant. This funding from the PA Departments of Health, Welfare and Insurance provided support for MCHC to sub-contract with other nonprofits in the county, training them in insurance enrollment and outreach strategies.
- ▲ MCHC coordinates a countywide effort enhancing public awareness and enrollment into subsidized health insurance programs (CHIP, Medicaid and adultBasic).
- ▲ MCHC, in partnership with Philadelphia Citizens for Children and Youth (PCCY), has been a sub-contractor in the Covering Kids and Families Initiative funded by The Robert Wood Johnson Foundation (RWJF). This initiative has included an enrollment fund administered locally by MCHC for reimbursement to agencies for completed insurance enrollments. In 2003, nearly 800 uninsured women and children countywide were enrolled in health insurance programs.
- ▲ In March 2003, MCHC coordinated a training for 38 county health and human service providers on MA and CHIP application eligibility criteria, application process and special issues concerning immigration status.



Depression

More than Baby Blues in Chester County

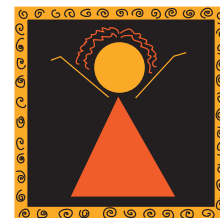
Hundreds of pregnant and postpartum women suffer from depression—1 in 8, according to the New England Journal of Medicine (7/24/02). Untreated depression can lead to increased health risks for mother and baby such as poor nutrition, substance abuse, premature birth and low birth-weight babies. In rare cases, it can lead to the mother taking her own life or her child's life.

Our Healthy Start program began to address this issue by screening women for depressive symptoms and referring them for further assessment and treatment. This work is critical, since a report in the Journal of the American Medical Association (7/2/03) reported that “ethnic minority individuals are less likely to obtain care for depression than white individuals and are less likely to receive appropriate treatment when they do seek care”.

Low-income women, especially Latinos and African Americans face many barriers in obtaining mental health services, such as cultural stigma, language, transportation, and lack of health insurance. Healthy Start recognizes the significance of postpartum depression in women in our community. Most national Healthy Start sites have selected the Edinburgh Postnatal Depression Scale—a self administered scale (in Spanish or English) that has been validated as effective for identifying postpartum depression among diverse racial and ethnic groups including Mexican women. MCHC staff received extensive training in the administration of this screening tool from the Health Federation in Philadelphia.

All Healthy Start mothers receive health education materials (in Spanish or English) explaining the symptoms and treatment of depression, as well as self-care interventions.

In 2003, 38% of all prenatal Healthy Start participants and 26% of postpartum participants scored at moderate to high risk for depression. Healthy Start staff connected them to either Family Service or the county mental health system for further assessment and treatment. Our partnership with these agencies has been critical in providing mental health care that is free of cultural, financial, or language barriers.



Studies have shown that depressed pregnant women also have a higher rate of obstetrical complications, preterm deliveries and 45 percent more miscarriages than non-depressed pregnant women (NY Times 1/13/04).

(3) Advocacy:

MCHC works for lasting changes in health access. PCCY funding (through a grant from RWJF) has enabled MCHC to facilitate focus groups in Spanish and English to identify barriers to insurance enrollment for families and suggest strategies to overcome the barriers.

MCHC serves on a statewide Cultural Diversity Advisory Committee of the PA Departments of Health, Insurance and Welfare to identify strategies to increase insurance enrollment for Latinos; MCHC is on the statewide Reaching Out Committee, and the PA Partnership for Children's Covering Kids and Families Coalition, and a countywide task force working with policy makers to increase available and accessible health coverage for low-income families.

Healthy Start staff help clients advocate for themselves with their managed care organizations. Locally, MCHC works with physician groups and hospitals to develop fee schedules for uninsured clients.

In September 2003, the U.S. Census Bureau released new figures indicating that the number of Americans lacking health insurance climbed by 5.7 percent in 2002, to 43.6 million, the largest single increase in a decade.

(State of the States, January 2004).

Healthy People 2010 Objective 1.1: "Increase the proportion of persons with health insurance."



MCHC gave the Martinez children a healthy start.

Community Outreach and Education

Through bilingual and bicultural Outreach Workers, Educators, and Trainers, MCHC closes the health information gap for hundreds of families—helping children start healthy and stay healthy. Highlights of 2003 include:

- ▲ **English Prenatal education classes** (“A Healthy Start for Moms-to-Be”) providing valuable information on pregnancy, childbirth and parenting were held in Coatesville, West Chester, and Phoenixville. Iris Ayala, a bilingual, ICCE certified childbirth educator facilitated the classes. 23 women and their partners attended.
- ▲ **Spanish Prenatal education classes** (“Comenzando Bien”), also led by Iris Ayala, were held in Kennett Square, West Chester, and Coatesville, with support from the Pew Charitable Trusts. 33 women and their partners attended.
- ▲ **Parenting Education classes** (“Parents Learning Together”/ “Padres Aprendiendo Juntos”) were held in the Healthy Start communities of West Chester, Coatesville, Kennett Square, and Phoenixville. 121 parents attended.
- ▲ **Car Seat Safety sessions** were held in Kennett, West Chester, and Phoenixville in collaboration with the Safe Kids Coalition/COAD, Safe Kids Coalition volunteers, CAT Pickering students, PA State Police and the Rotary Club of Phoenixville. 28 parents attended and had their car seats inspected or received new ones.
- ▲ **9th Annual Healthy Start Community Baby Shower** in Coatesville, co-sponsored by Keystone Mercy Health Plan, with over 100 new parents and their children attending.
- ▲ **MCHC Annual Meeting** on “Perinatal Depression-Prevention and Treatment” led by Jane Marans Summers, M.D., and generously sponsored by National Penn Bank.



Ninth Annual Baby Shower attendee Aimee Wroten



WRN presented a check for \$1,000 to MCHC as WRN's "Community Outreach partner". (Left to right): Beth Dyas, MCHC Community Outreach Coordinator; Deborah McKenty, MCHC board member; Yvette Franklin, MCHC board member; Adel Ducine, WRN; and Denise Werkley, WRN.

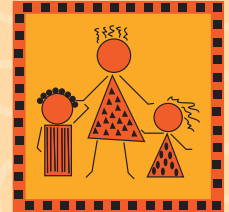


Healthy Start staff Maria Jordan, Vale Coleman, Maritza Rivera Cochran, Judith Harris, and Jane Richards of the Chester County Assistance Office.



United Way of Chester County and the Chamber of Commerce of Greater West Chester enjoyed a holiday breakfast, generously donated by the Stadium Grill for members to donate new toys, books and infant items.

Financial Statement 2003



Healthy Start Consortium

Debra Barker, YWCA of Chester County
 Carol Berger, Phoenixville Area
 Community Services
 Kathy Brauner, Chester County Office of
 Human Services (FSSR)
 Esther Brown, Chester County Cares
 Pat Bush, Neighborhood Health Agencies, Inc.
 Tomasina Chamberlain, Planned Parenthood
 of Chester County
 Debbie Christie, CYWA Family Center
 Sue Cusack, Brandywine Hospital
 Rosemary Davignon, Chester County
 Health Department (WIC)
 Andrea Devoti, Neighborhood Health
 Agencies, Inc.
 Julie Funk, Chester County Hospital
 Peggy Harris, Project Salud
 Helen Heidelbaugh, Community Volunteers
 in Medicine
 Laura Keslick, Chester County Office of
 Housing and Community Development
 Ruth Kranz-Carl, Chester County Office of
 Human Services
 Burroughs Mack, Family Services of
 Chester County
 Cyd McCord, CASE, Young Parents Program
 Candace McCoy, CYWA
 Debra Mellon, Chester County Hospital
 Anita O'Connor, La Comunidad Hispana
 Jane Richards, Chester County
 Assistance Office
 Margaret Rivello, Chester County
 Health Department
 Dolores Smith, March of Dimes of SEPA
 Harriet Snyder, Independence Blue Cross/
 Blue Shield – Caring Foundation
 Mary Thomson, Chester County Hospital
 Elizabeth Walls, Chester County Health
 Department (Personal Health Services)
 Connie Winchester, Oxford Neighborhood
 Services Center
 Pat Yoder, Chester County
 Health Department (Title V)

REVENUES AND SUPPORT

Grants	\$1,055,388
Contributions:	
Foundations, Corporations & Individuals	274,064
Investment Income	14,528
Unrealized gain (loss) on beneficial interest in assets held by a community foundation	<u>2,509</u>
TOTAL REVENUES AND SUPPORT	<u>1,346,489</u>

EXPENSES

Program Services:	
Children's Health Insurance	103,627
Healthy Start	982,265
Management and General	103,740
Fundraising	<u>85,380</u>
TOTAL EXPENSES	<u>1,275,012</u>

CHANGE IN UNRESTRICTED NET ASSETS	<u>71,477</u>
--	----------------------

Individuals

Anonymous (5)
 Dr. & Mrs. Joseph L. Abbott
 Mr. & Mrs. Francis Abbott, Jr.
 N. Alloway
 Margaret P. Anderson
 Iris Ayala
 Timothy & Marjorie Barnard
 Elin M. & Mahlon Z. Bierly III
 Stuart & Mary Brooks
 Lori Brubaker
 Mary Bruce
 John & Denise Bryer
 Pamela & Jeffrey Bryer
 Pat Bush
 Louise Cantrell-Kehoe
 Paula Chekemain
 Sara B. Corbishley
 Ross Ann Craig
 Susan Crawford (WRN)
 Deborah Crisafulli (WRN)
 Anabella Cuhna

Daryl Klein
 Catherine Klonicke
 Brian & Stephanie Krug
 in honor of Evan Hambleton
 Jim & Carolyn Lennon
 Linda Lewis
 Stuart & Suzanne Levy
 Mr. & Mrs. Randall Lyons
 Patricia McCarter
 Lisa & Chris McGuire
 Deborah A. McKenty
 Mary C. McLearn
 Bob & Mary McMackin
 Mr. & Mrs. Robert D. McNeil
 Heidi & Dick McPherson
 David & Lee Melchiorre
 Joseph & Maryann Mesure
 Mrs. J. Maxwell Moran
 Rae Morgan
 Ken & Moira Mumma
 M. Cristina Navarro
 Anita O'Connor
 Lawrence & Susan O'Donnell

Betsy Walls
 Thomas & Dianne Walsh
 Connie Watt
 Jason White
 Dolly Wideman-Scott
 Barry & Lois Wiggins
 Brad Wilinsky
 Connie Winchester
 Paul & Marcia Woodruff
 Suzanne Young (WRN)
 Robert Zearfoss

The Landon Family
 Foundation
 Longwood Foundation
 March of Dimes of SEPA
 Moms Club of
 West Chester West
 Jane C. MacElree Family
 Foundation
 The Mushroom Festival, Inc.
 National Penn Bank
 Oxford Foundation
 Philadelphia Citizens for
 Children and Youth
 The Robert Wood Johnson
 Foundation –
 Covering Kids & Families
 Pennsylvania's Reaching Out
 Program
 The Pew Charitable Trusts
 The Philadelphia Foundation
 Milton Apfelbaum Fund
 Phoenixville Community
 Health Foundation
 The Stewart Huston
 Charitable Trust
 Sweet Pea Caterers
 United Way of Chester County
 United Way of Southern
 Chester County
 U.S. Department of Health and
 Human Services
 (Healthy Start)
 U.S. Trust Company
 West Chester Charity Ball
 West Chester
 Civic Association
 Women's Referral Network of
 Chester County
 WOMENS WAY

Faith Communities

Beth Chaim Sisterhood
 Church Women United –
 West Chester Area
 Downingtown Friends Meeting
 First Presbyterian Church –
 West Chester
 Grove United Methodist
 Church – United Methodist
 Women
 United Church of Christ -
 East Goshen

Foundations, Corporations, Businesses and Organizations

The 1957 Charity Trust
 Agilent Technologies
 Anne Hannum Fund of the
 Chester County
 Community Foundation
 Brandywine Health and
 Wellness Foundation
 The Bugle Family Fund of the
 Chester County
 Community Foundation
 Chester County Department of
 Community Development
 Chester County Health
 Department's
 Comprehensive Tobacco
 Control Program
 Claneil Foundation, Inc.
 Daily Local News -
 Give-A-Christmas Fund
 Robert & Joan Dircks
 Foundation
 Henrietta Hankin/
 Hankin Foundation
 James M. & Lois B. Herr
 Family Fund of the
 Chester County
 Community Foundation
 Charles L. Huston III
 Chester County
 Community Foundation
 Jordan Award
 The Huston Foundation
 JOYA
 K&M Fund of the
 Chester County
 Community Foundation

Community Baby Shower Volunteers, Sponsors & Agency Participation

Aetna
 Amanda Ayala
 Marcia Bellamy
 Pania Bogadene
 Bridge of Hope
 Caring Foundation for
 Children (Independence
 Blue Cross & Highmark
 Blue Shield)
 CYWA (Community, Youth
 and Women's Alliance)
 Chester County Assistance
 Office
 Chester County Health
 Department
 Chester County Intermediate
 Unit - Head Start
 Chester County Intermediate
 Unit - Young Parents Program



Beth Dyas (center) with Girl Scouts of Freedom Valley and Baby Bundles.

Barbara Reese Currie
 Bruce & Judy Diner
 Sydelle Diner
 Andrew Dinniman
 Debbie Early-O'Rourke
 Margaret H. Ewing
 Brenda Fix
 Dr. & Mrs. William F. Foxx
 Willa Friday
 Wesley & Toni Fritz
 Sara Anne Frye in honor of
 Evan Hambleton
 Anne & Howard Fussell
 Mr. & Mrs. James E. Gasho, Jr.
 Corazon Gemil, MD
 Sherry & Morrie Gold
 Janet Goodhart (WRN)
 Mr. & Mrs.
 George F. Gowen, Jr.
 Dean & Christine Grantham
 Barry & Sandi Hambleton
 Judith Harris-Stevenson
 Daniel & Joy Hartshorn
 D. Hotmer, MD
 Ann & Steven Hutton
 Karen & Francis Iacobucci
 Ruth D. Jensen
 Claudia Jones
 Phoebe Kitson Davis
 in honor of Evan Hambleton

Catherine Palmquist
 Sarah Peck & Daniel Wofford
 Gail Pickett, CRNP
 Paula Purcell
 Emily Purnell-Johnson
 Jacquelyn Quinn Dickey
 Gail Rader
 in honor of Evan Hambleton
 Dr. & Mrs. Gilbert Rose
 Mary Ann Rossi
 Mary Rouse (WRN)
 Darlene Rudiman
 John & Linda Saling
 in honor of Evan Hambleton
 Susan Salkowitz/
 Salkowitz Associates
 David & Sarah Sands
 Andrea & Gopal
 Sankaran, MD
 Marie Satterwhite
 Brad & Linda Schaeffer
 Debra Schaffer (WRN)
 Tracy & Tom Schindler
 Louise Schorn Smith
 Bob & Hannah Spatola
 Ione Apfelbaum Strauss
 Christine Taylor
 Meredith Tolsdorf
 Cathy Toner
 Eva L. Verplanck
 Samuel & Mary Ann Wagner

Chester Valley Learning Center
 COAD
 Tiffany Colon
 Domestic Violence Center of Chester County
 Debbie Early-O'Rourke
 Nia Harris
 Chanell Jones
 Keystone Mercy Health Plan – Mike Pincus
 Caitlin Krulikowski
 La Comunidad Hispana
 March of Dimes SEPA
 Luz Melendez-Vasquez
 Joseph Mesure
 MOMS Club of Coatesville
 Penn State Cooperative Extension
 Planned Parenthood of Chester County
 Trinity Episcopal Church – Coatesville
 Deanna Weiss
 Barnia Young

In-Kind Donations & Volunteers

A. Duie Pyle
 AETNA
 Angela Andrews
 Susan Baranek
 Diane Bednarik – DNB Promotions
 Beth Chaim Sisterhood (Baby Bundles)
 Jonathan Bogen – Health CIO
 William, Ellen, Jane, and Dan Bryer
 Bob & Lucille Bugle
 Caring Foundation for Children (Independence Blue Cross & Highmark Blue Shield)
 Chase Manhattan Mortgage
 Chamber of Commerce of Greater West Chester

Chesterbrook Academy – Staff, Parents, and Students
 Chester County Health Department
 Dolores Colligan – Chester County Dept. of Community Development
 Chester County Hospital
 Christ Memorial Lutheran Church
 Mike Dalzell – Signs Now
 Megan Davis
 Lisa DeLaurentis
 Mrs. S. Desjardin
 East Bradford Elementary School
 Susan Elko
 John Enyart - EAI, Inc.
 Emily Ferris
 First National Bank of Chester County employees
 First Presbyterian Church
 Glen Acres Elementary School students
 Freedom Valley Girl Scouts
 Haydee Gullaksen
 Evan & Mary Hambleton
 Merry Harsch
 Herman Miller/Spectrum
 Pam Hessler & Associates Photography
 Hopewell United Methodist Church
 Gloria Hundley, Grove United Methodist Church
 Janet Hunter
 J. Rechner Associates
 Bertha Jackmon
 Bridget Kaye
 Jill Kilmartin - Freedom Valley Girl Scouts
 Alexa Kottmeyer - Freedom Valley Girl Scouts
 Christy Kristachamrick
 Craig Kristoff
 Caitlin Krulikowski
 Charlotte LaBorde
 Mary Laviola – Sovereign Bank

Victoria Lee
 Louise Malady
 Mary C. Howse
 Elementary School students
 Louisa McDonald - Sovereign Bank - Santa's Brigade, Main Line Volunteer Force
 Barbara McIntosh – Grove United Methodist Church
 Deborah McKenty
 Debbie Moyer
 Nancy Moyer
 Dr. M. Murphy
 Gay Nussbag and Employees of National Penn Bank
 Donna Oeste - Freedom Valley Girl Scouts, Downingtown Service Unit
 Harry Orth – Essex Envelope
 Liam & Debbie O'Rourke
 Penn Wood Elementary School students
 Phi Sigma Pi – University of Delaware
 Phoenixville Rotary Club
 Patricia Rauch – Sandvik Innovations
 Dr. Frank Recupero – Downingtown General Dentistry
 Dr. & Mrs. H. Riordan
 Charlene Ryan – Ashbridge Manor
 Saints Philip & James Church
 Sarah Sands
 Linda Schaeffer and employees of First National Bank of West Chester
 Kristin Wagner
 West Chester Business & Professional Women Club
 Westtown Lower School students
 Karen Wolfrom – Kiwanis Club
 Women's Referral Network
 WOMENS WAY
 Kim Wright
 Ildemaro & Neydary Zambrano
 Gerri Zumbano – Barrel Store (Parkway Center)



Advocates Sonia Ortiz and Vale Coleman with Gloria Hundley (center) at the MCHC Open House with baby bundles for preemies.



Board members Debi McKenty and Evan Hambleton who collected infant care items for MCHC.



NON-PROFIT ORG.
U.S. POSTAGE
PAID
WEST CHESTER, PA
PERMIT NO. 479

**Maternal and Child
Health Consortium
of Chester County**

30 West Barnard Street,
Suite #1
West Chester, PA 19382
610-344-5370
mchc@ccmchc.org
www.ccmchc.org



United Way



Maternal and Child Health Consortium is an Associate Member of WOMENS WAY and a member agency of the United Way of Southern Chester County and the United Way of Chester County.

Supported in part by project No. 93.926.E from the Healthy Start Initiative, Maternal and Child Health Bureau, Health Resources and Services Administration, Department of Health and Human Services.



MCHC Staff: top row (left to right): Maria Ortiz, Iris Ayala, Pamela Bryer; Claudia Jones, Christine Grantham, Lisa DeLaurentis, Maryann Mesure, Amanda Norlen, Amelia Boyer, Terri Hagerty, and Delmy Orellana-Baires; middle row (left to right) Neydary Zambrano, Sonia Ortiz, Beth Dyas, Linda Peters, Cristina Navarro, Judy Harris, and Linda Harmon; bottom row (left to right) Vale Coleman, Milena Lanz, Maria Rodriguez, and Maritza Rivera Cochran.